

These test results are for Research and Development purposes only

Page 1 of 1



Sample **Miami Heat**

Strain

**<LOQ**                      **20.06%**                      **23.81%**

$\Delta 9$  THC                      Total CBD                      **Total**  
**Cannabinoids**

**Not tested**                      **Pass**                      **238.1**

**9.11**                      **mg / g Total**

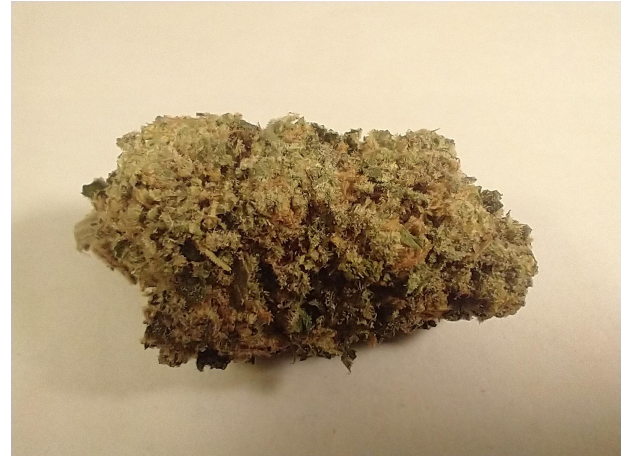
**Water Activity**                      **Moisture**                      **Cannabinoids**

Sample ID



Matrix

Flower



Harvest/Prod Date

Report Created

1/19/2023

Results Valid Until

1/19/2024

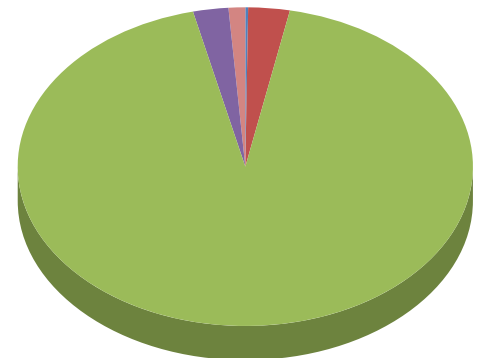
Sample Extracted  
1/18/2023 18:00

Sample Analyzed  
1/18/2023 19:48

Method SOP LO001-R11


Cannabinoids	%Weight	mg/ gram	LOQ(% /w)
$\Delta 9$ THC	<LOQ	<LOQ)	0.06
THCA	0.70	7.0	0.06
Total THC (THCA*0.877)+9THC	0.66	6.6	0.11
CBDA	22.19	221.9	0.06
CBD	0.60	6.0	0.06
CBN	<LOQ	<LOQ)	0.06
$\Delta 8$ THC	<LOQ	<LOQ)	0.06
CBC	<LOQ	<LOQ)	0.06
CBGA	0.28	2.8	0.06
CBG	<LOQ	<LOQ)	0.06
CBDV	<LOQ	<LOQ)	0.06
CBDVA	<LOQ	<LOQ)	0.06
THCVA	<LOQ	<LOQ)	0.06
CBDQ	<LOQ	<LOQ)	0.06
HHC	<LOQ	<LOQ)	0.09

●  $\Delta 9$  THC    
 ● THCA    
 ● CBDA    
 ● CBD  
● CBGA



Total THC and Total CBD are calculated values per OAR 333-064-0100. Cannabinoid values for plant matter samples are reported on a dry weight basis. Water activity action level is 0.65Aw. LOQ= Limit of Quantitation. NR=Not Reported.

Rogue Research Lab LLC  
 218 E. Main Street, Rogue River, OR 97537  
 Tel. 541-582-1962  
 ORELAP 4107    OLCC 101050708B  
[rogue-researchlab.com](http://rogue-researchlab.com)

  
 \_\_\_\_\_  
 Craig Berry - Lab Director  
 1/19/23

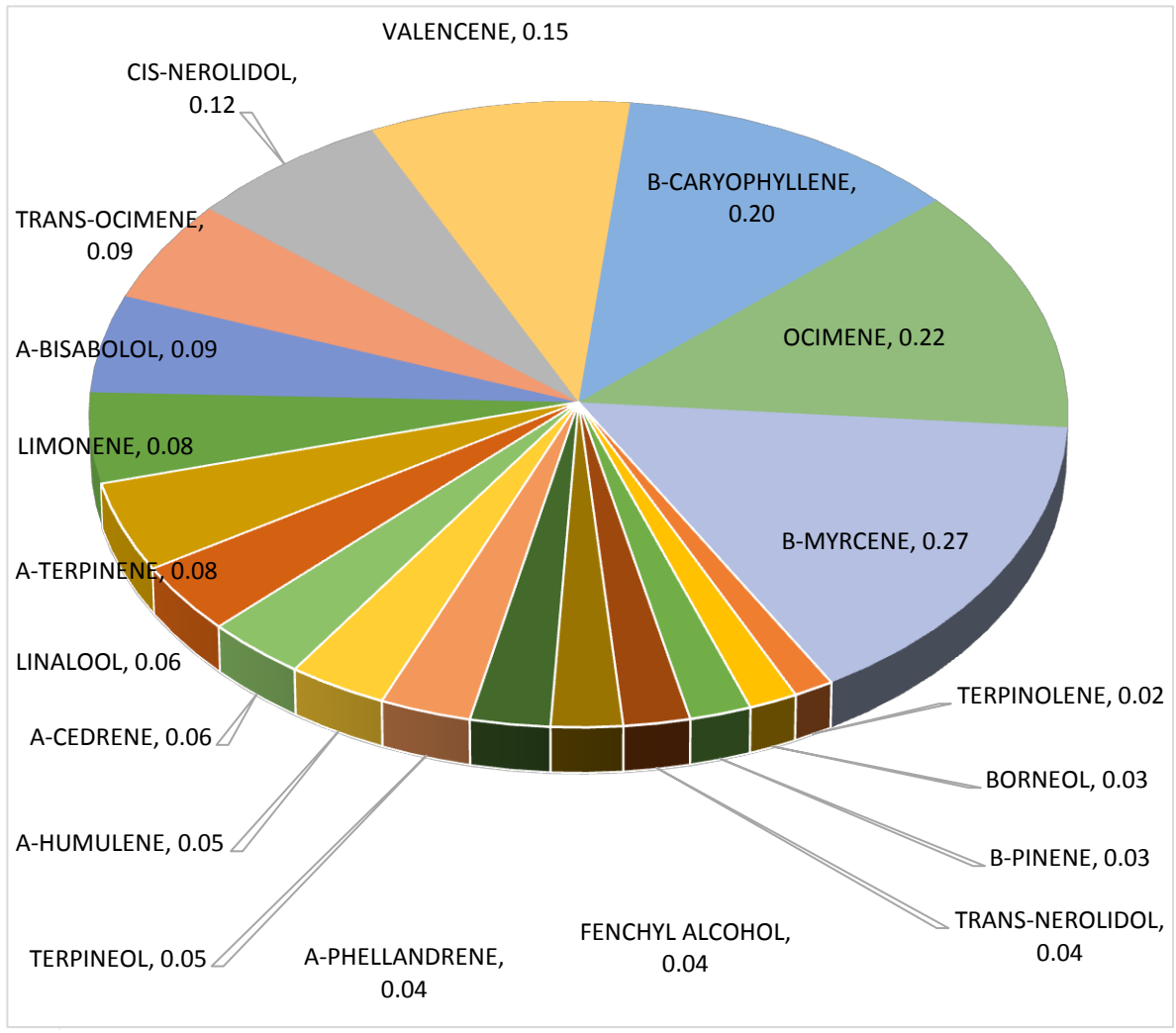
Results pertain to submitted samples only. Rogue Research Lab LLC makes no claims as to the consumer safety or other risks associated with any detected or non-detected amounts of any pesticides, solvents or other adulterants. This report shall not be reproduced, unless in its entirety, without written approval from Rogue Research Lab LLC. Samples were received in good condition and all QC samples met acceptance criteria of the method; data available upon request. For informational purposes only.



# Terpene Analysis

**Customer** [REDACTED]  
**Sample Name** Miami Heat  
**File Name** 23011100584  
**Date/Time Extracted:** 1/18/2022 18:00  
**Date/Time Analyzed:** 1/18/2023 21:25  
**Analysis Method/SOP:** LO 001R10/4-22RC1124

TESTED FOR : A-BISABOLOL, A-CEDRENE, A-HUMULENE, A-PHELLANDRENE, A-PINENE, A-TERPINENE, B-CARYOPHYLLENE, B-MYRCENE, BORNEOL, B-PINENE, CAMPHENE, CAMPHOR, CARYOPHYLLENE OXIDE, CEDROL, CIS-NEROLIDOL, D-CARENE, DL-MENTHOL, EUCALYPTOL, FARNESENE, R&L FENCHONE, FENCHYL ALCOHOL, GERANIOL, GERANYL ACETATE, G-TERPINENE, GUAJOL, ISOBORNEOL, ISOPULEGOL, LIMONENE, LINALOOL, NEROL, OCIMENE, P-CYMENE, PULEGONE, SABINENE, TERPINEOL, TERPINOLENE, TRANS-NEROLIDOL, TRANS-OCIMENE, VALENCENE.



*Craig Berry*  
Craig Berry - Lab Director 1/19/2023

Terpene total w/w% 1.73